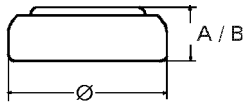


Data Sheet

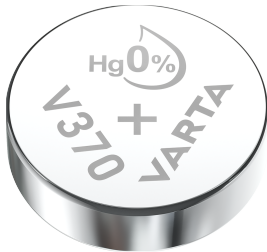
Type Number.....20370
Designation IECSR69
System.....Silver oxide / Zinc /
 NaOH - Electrolyte



Nominal Voltage1,55 V
 Capacity30 mAh
 (33 kOhm continuous load at 20°C down
 to 1,2 Volts)

Weight0,57 g
 Volume0,14 ccm
 CodingDate of Manufacturing
 Month/Year

Dimensions	min.	max.
Diameter (Ø).....	9,25 mm	9,5 mm
Height (A/B).....	1,85 mm	2,1 mm



Operating Temperature.....0°C - 60°C
 Self DischargeLess than 10%
 per year at 20°C

Segment.....Watch

Main Applications.....Watch
 Photo
 Electronic

Typical Discharge Capacities (at 20°C)

Discharge Type	Load	End Voltage:	1,2 Volts
Continuous 24h/d,7d/w	33000 Ω	Time:	710 hours
		Capacity:	30 mAh
		Energy :	43 mWh

