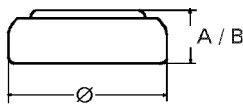


Data Sheet



Type Number 20377
Designation IEC SR66
System Silver oxide / Zinc /
 NaOH - Electrolyte

Nominal Voltage 1,55 V
Typical Capacity C 24 mAh
 Load 20 kOhm, at 20°C down to 1.2 V

Weight (approx.) 0,39 g
Volume 0,09 ccm
Coding..... Date of Manufacturing
 Month/Year

Temperature Ranges

	min	max.
Storage	-10°C	65°C
Discharge	-10°C	65°C

Dimensions

	min	max.
Diameter (Ø).....	6,7	6,8
Height (A/B)	2,4	2,6

Segment Watch

Main Applications Watch
 Photo
 Electronic

Typical Capacities (at 20°C)

Discharge Type	Load	End Voltage:	1.2 V
Continuous 24h/d, 7d/w Current [µA]:	20000 Ω 78	Time:	306 h
		Capacity [mAh]:	24
		Energy [mWh]:	37